

RAFTER Calculation Worksheet

Instructor: Georger

Name: \_\_\_\_\_

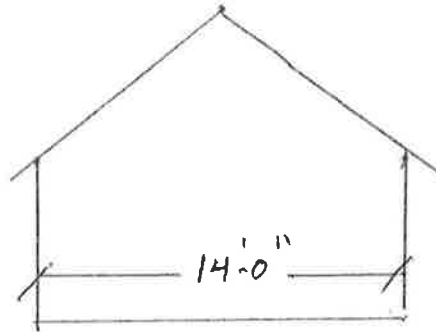
Program/Class: Jr. Carpentry

Date: \_\_\_\_\_

Instructional Objective (s):

With 95% accuracy, students will calculate rafters based on the given dimensions below.

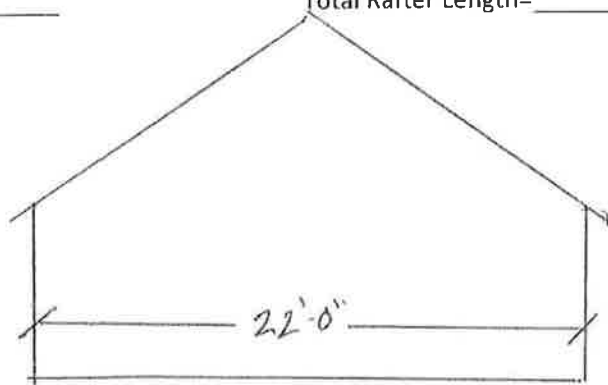
Instructions: For the drawings below, fill in the blanks for the appropriate rafter sizes. Assume 2x6 sub fascia



4/12, 14" OH

RLL= \_\_\_\_\_

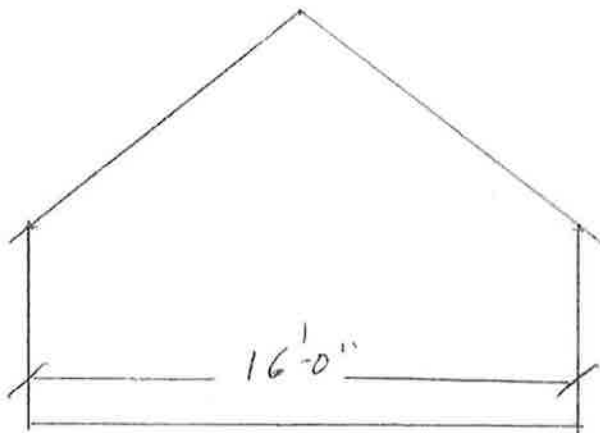
Total Rafter Length= \_\_\_\_\_



8/12, 12" OH

RLL= \_\_\_\_\_

Total Rafter Length= \_\_\_\_\_



6/12, 12" OH

RLL= \_\_\_\_\_

Total Rafter Length= \_\_\_\_\_