

GEORGER SENIOR LAB OFF-SITE LEARNING PACKET DAY 9

Instructor: Georger

Date: Day 9

Program/Class: Sr. Carpentry

Period: 5b-8

State Indicator/Competency:

7.1 Maintain general safety in accordance with government regulations and health standards

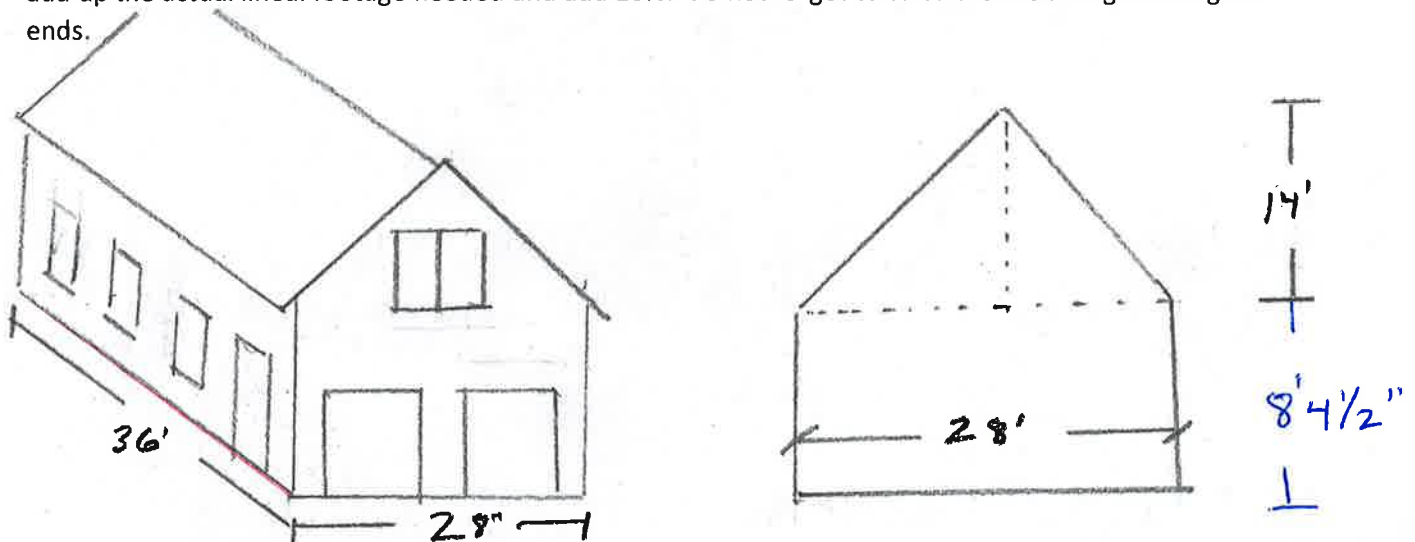
14.1 Interpret construction drawings and demonstrate layout procedures

Instructional Objective (s):

With 100% accuracy students will be able to correctly estimate siding and trims required for the Smith building project.

The Smith Residence detached 2-story building is 28' w x 36' l. It has 8'-4 1/2" side walls and is 12/12 pitched gable construction. The windows have built-in J-channel, however the two 9'x7' garage doors, as well as the 3-0 x 6-8 man door will require J-channel. J-channel will also be required where the siding meets the F-channel on the rake edges. Finally, undersill trim will be required on the eave edges.

When calculating how much siding you will need to order you will need to calculate the area and add 5%; do not deduct for the door or window openings. When calculating the actual trim you will need, add up the actual lineal footage needed and add 10%. Do not forget to calculate the siding on the gable ends.



Via email, send your estimate for required amount of siding, J-channel, and undersill trim.