

Woodruff-Junior-Lab-Off-Site Learning Packet Day 1

Academic/Career & Technical/Related Demonstration Lesson Plan

Dental Assisting Lesson Plan

Nancy Woodruff

Date: Day #1

Period: 1-4A JR

State Indicator/Competency:

ODE Course: Oral Diagnosis and Treatment Planning

- 2.3.1. Build and decipher medical term meanings by identifying and using word elements (e.g., word roots, prefixes, suffixes, combining forms).
- 2.3.3. Use diagnostic, symptomatic and procedural terms to read and interpret various medical reports.

Instructor Objectives:

- 1. Student will differentiate between 4 types of embrasure spaces with 100% accuracy.
- 2. Student will identify a contact area/point with 100% accuracy.

Materials:

- 1. Coloring Worksheet
- 2. Red, blue, green, orange pencils
- 3. Black pen

Method of Instruction:

- 1. Self-study labeling/coloring activity

Activities:

- 1. Students will label/color the occlusal embrasure(s) with red pencil on picture A.
- 2. Students will label/color the lingual embrasure with blue pencil on picture B
- 3. Student will label/color the facial embrasure with green pencil on Picture A
- 4. Student will label/color the gingival embrasure with orange pencil on Picture B
- 5. Student will place a black X on the contact point on each of the line art areas both pictures.

Closure:

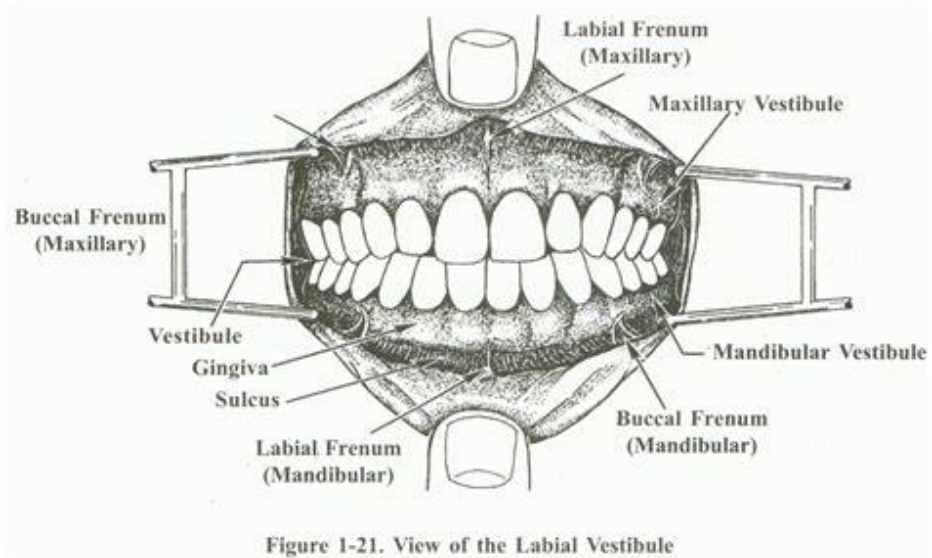
- 1. What is the difference between 4 types of embrasure spaces?
- 2. Where are the contact areas/points on the model?

Assessment(s):

- 1. Instructor will assess the completion of the worksheet for participation points
 - a. Worksheet done completely (10 points)
 - b. Worksheet not complete (0 points)

Woodruff-Junior-Lab-Off-Site Learning Packet Day 1

PICTURE A



PICTURE B

